



ADVANCED DIPLOMA in SOCIAL ENTERPRISE

2017 COHORT

Participants





Karen Arbuckle

Karen holds two roles in social enterprise - Chairperson and Board Director of **Co-Operative Alternatives** as well as Chairperson and Board Director of **Northern Ireland Community Energy (NICE)**.



Natasha Black

Natasha is a founding director for **Yallaa CIC** and her role lies within the business development of the social enterprise that aims to promote Arabic language and culture and is registered as a Community Interest Company.



Martin Busch

Martin currently works in the **Lisburn Credit Union** with specific responsibilities for compliance risk at all levels and all areas of the social business as well as developing outreach services that combine financial guidance with financial management that help to increase financial inclusion amongst the local community.



Seamus Corrigan

Seamus is employed by the **Colin Neighbourhood Partnership Limited** as a Commercial Manager responsible for the development of new Social Economy Businesses and the management of two existing Social Economy Businesses: Colin Care – Domiciliary Care Agency



LAURA COUSER

Laura has the role of Operations and Business Manager, **TIDES Training**, Peace Building and Conflict Transformation organisation including strategic planning and change management processes.



McCARTAN DIGNEY

McCartan is heavily involved within the **Downpatrick Community Collective** since 2013. This collective is embarked on a development programme to build a sustainable community enterprise based around the old PSNI site and buildings.



MARK DYER

Marks role in **Epilepsy Action** is to work across Northern Ireland and strategically improve epilepsy services and to develop and support Epilepsy Action Northern Ireland's community based services.



JOHN GIRVAN

The DigiKids Club is a start-up Social Enterprise based in Mid-Ulster. It delivers digital arts skills to rurally isolated children in the 7-11 age group.



BRIÈGE JENNINGS

Briège is Rural Development Officer, **County Down Rural Community Network** offering help and support to rural community and voluntary organisations across Newry Mourne and Down Council area.



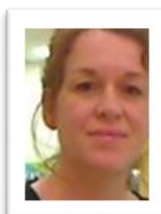
AIDAN KEARNEY

Working as a Senior Training Officer with **Supporting Communities** Aidan designs develops and delivers training programmes to staff and tenants from the Northern Ireland Housing Executive and also within Housing Associations.



MICHAEL KEARNEY

Michael is in his second year on a management development programme to become part of the management team in **GLL** within a leisure complex. His role has incorporated different projects under our four pillars: Business, Communities, People and Service



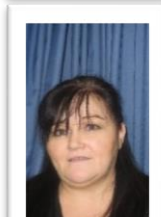
CLARE LEEMAN

Clare is currently managing the **Southern Area Housing Support Service (SAHSS)**, a **Positive Futures** peripatetic service which supports adults with a learning disability who already have their own tenancy.



CIARAN McCARRON

Ciaran manages **Cultúrlann Uí Chanáin** which consists of Café and Performance Space, Language Classes, Music Academy, Youth Club and Education Programmes. It also has 3 long-term small businesses as tenants.



SIOBHAN Mc DERMOTT

Siobhan is Chairperson of **Lisanelly Regeneration Group** which was established to meet community needs by providing a wide range of activities which in turn provides a benefit to the local Gortview / Killybrack community.



DAN Mc EVOY

Dan is Chair of the **Downpatrick Community Collective**, a community group that represents the interest of several smaller community groups regarding regeneration issues. The Downpatrick Community Collective aims to help regenerate & revitalise Downpatrick Town centre through the establishment and provision of a 30 bedroom hotel facility with an included social hub



TONYA MCMULLAN

Tonya's background is in visual arts with an interdisciplinary practice in sculpture, installation and performance. The focus of her practice is the exploration of everyday life in the public space and her most recent collaborative venture, **Infinity Farm**, is an urban farm social enterprise project which brings together her interests in art, communities and the environment.



DAVID Mc PHILLIPS

David's role as a Board member with **Killynure Community Association** is a joint responsibility to manage the charities strategic and operational directions ensuring that the objectives of the organisation are met. His emphasis is to ensure KCA has a social impact that is tangible and measurable.



JIM MASSON

In his day job Jim is the MD of 'Down News', an internet newspaper but is also one of the driving forces behind a new social enterprise project with a view to building a sustainable social business within the **Ardglass Harbour** local community as well as **Mourne Sailability** aims to provide sailing for the disabled, elderly, unwell or with mental health issues.



ASHLEY MOORE

Ashley is very heavily involved in the delivery of services within the **GK House / Lisanelly Regeneration Group**. In her role she coordinates and delivers services across a wide range of community activities.



CAROL SHANE

As a project officer, Carol works across the Antrim & Newtownabbey Council's economic and community development sections within the **Community Planning and Regeneration** department to identify community organisations with the potential to become social enterprises.



AARON THOMPSON

Aaron's role as a Chair of **Killynure Community Association** is an overarching responsibility to manage the charities strategic and operational plans for the organisation. As a founding member of Killynure Community Association he has been focussed on the provision of resources and facilities which bring about the transformation and regeneration of the area.



ARDEE WALLACE

Ardee is working on a freelance basis providing **Core Services** to the community, voluntary and social economy sectors within Northern Ireland and the Republic of Ireland. Her work involves a wide range of activities such as: the Design and delivery of bespoke training programmes, Preparation of external evaluation reports, Strategic planning, business planning and financial services for the Community sector.



CATHERINE WALSH

Catherine is a second year trainee manger with the UK wide social enterprise leisure organisation **GLL**. She works across fourteen centres to gain hands on experience of developing the business as a social enterprise to increase our engagement in community activity as well as look for social innovation opportunities both inside GLL and in partnership with local communities.

The 2017 ADSE Cohort in action in the Jordanstown Campus - Ulster University



SSEI OPERATIONS PARTNER



Bill Manson
Director Podiem Ltd